

# Bird Field Note

## Spring Breeding, Nocturnal Flight Call Monitoring and Raptor Migration

4/25/15

Debbie Leick



Field Observations.....	2
Nocturnal Flight Call Monitoring.....	9
RVRI Spring Migration Update.....	10

Kate and William observed the pygmy-owl pair mate three times on Monday, April 20th. Based on the presence of three eggs in the cavity on Wednesday, we suspect they initiated the nest sometime on Monday afternoon.



Kate photographed the banded male Bald Eagle from the clubhouse nest. Cherin from RVRI has been checking the nest daily and thinks the eggs may have hatched about 2 weeks ago. She noticed two hatchlings this week.



015-04-24 14:37:17

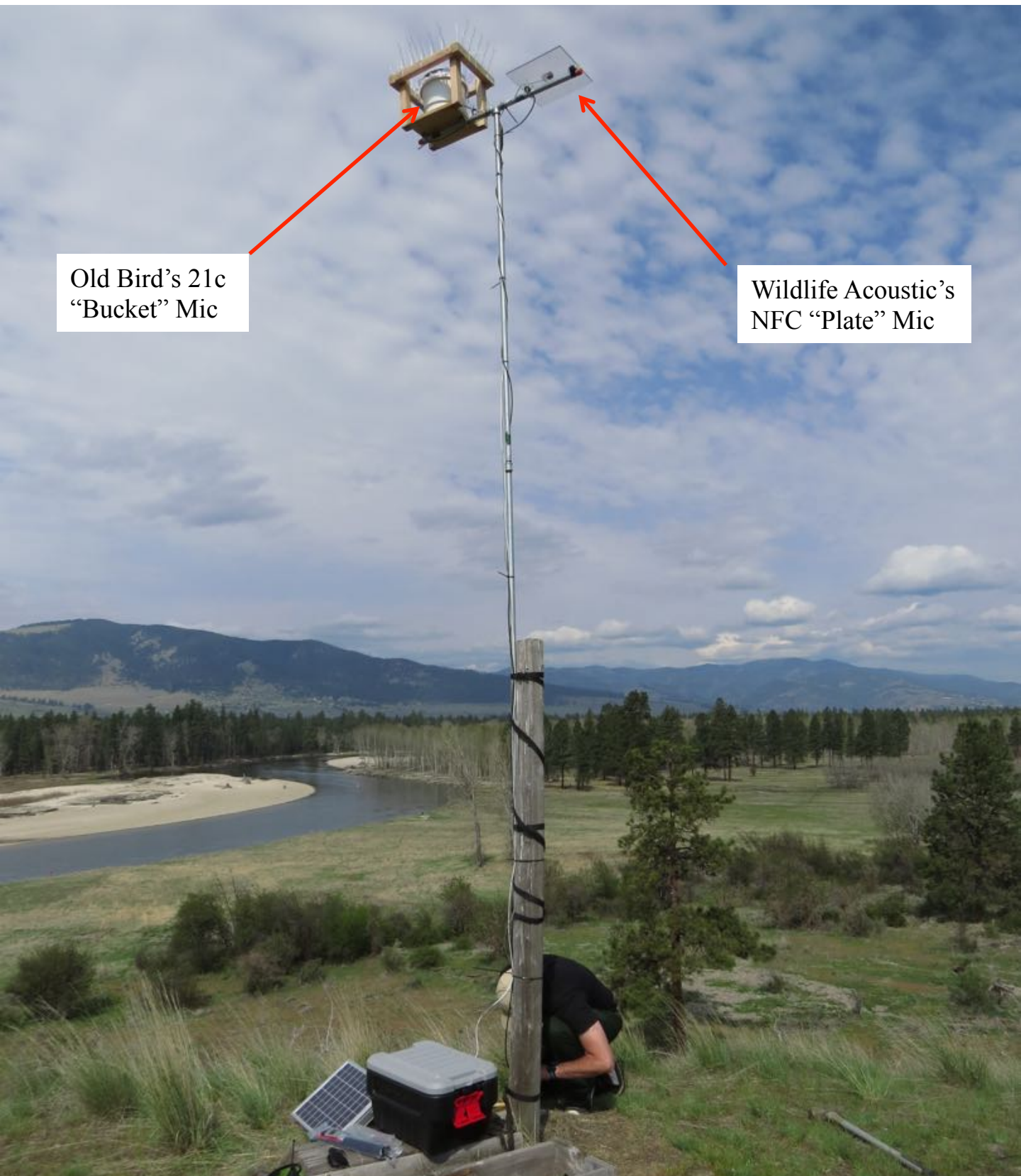


Lewis's Woodpeckers appeared at the suet feeders on Friday, April 24<sup>th</sup>. We will watch for colored leg bands.

A European Starling investigated the swift box in Sheep Camp.



## Nocturnal Flight Call Monitoring



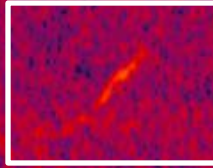
Old Bird's 21c  
"Bucket" Mic

Wildlife Acoustic's  
NFC "Plate" Mic

Gus designed a new mast that allows us to compare Old Bird's 21c microphone to Wildlife Acoustic's nocturnal flight call (NFC) microphone. Nature Sound Electronics modified the Old Bird mic to work with the Songmeter recorder. The 21c uses a method to amplify sounds that can result in two to five times as many recorded nocturnal flight calls.

Old Bird's 21c  
"Bucket" Mic

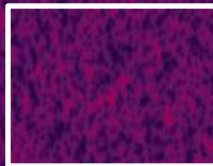
Sora



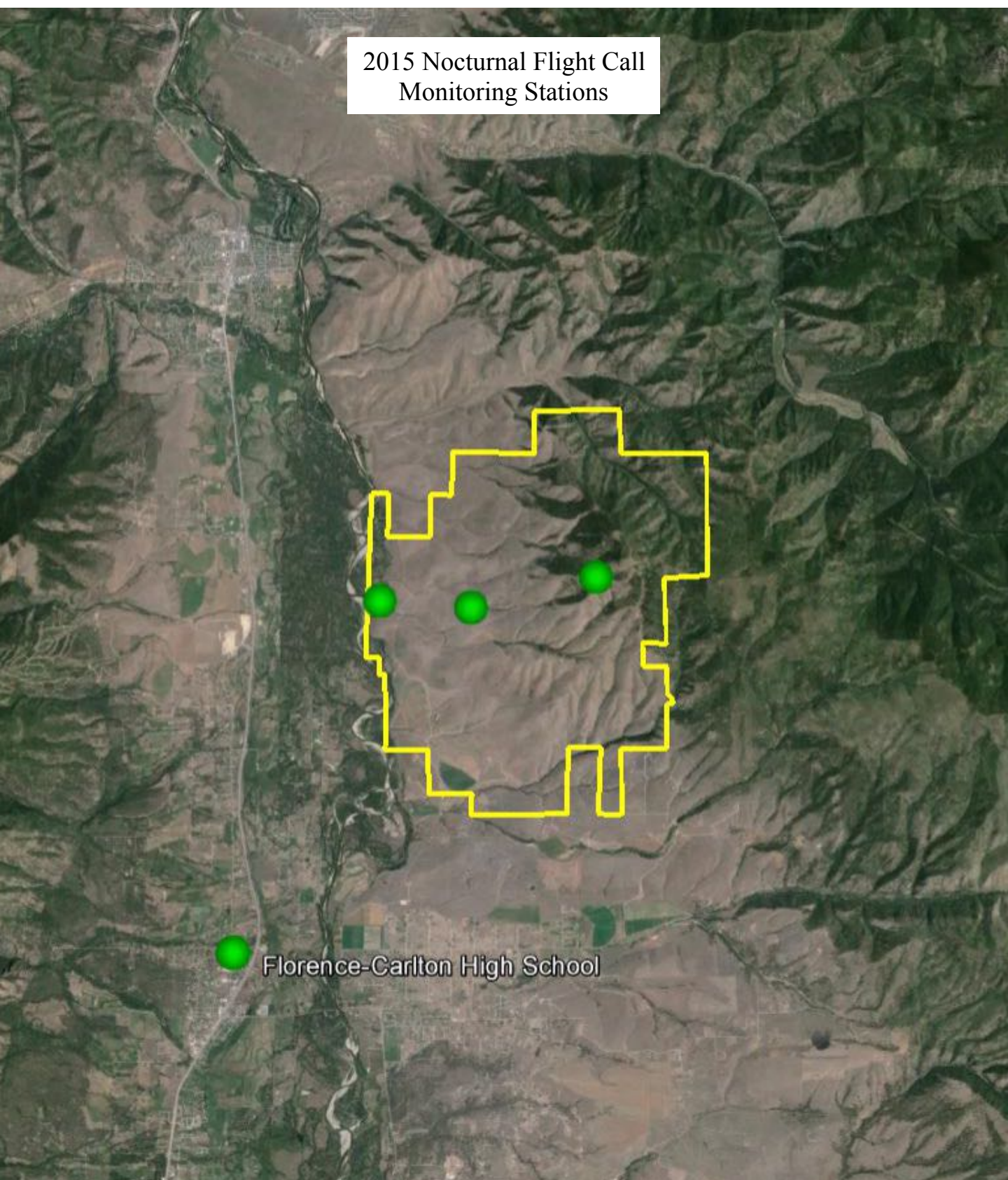
I processed the first night's recordings with Old Bird's "tseep" and "thrush" detectors and found better performance from the 21c microphone. A Sora call from the 21c (above) showed stronger amplitude than the almost invisible call from the NFC mic (below).

Wildlife Acoustic's  
NFC "Plate" Mic

Sora



We applied for and received a grant from Montana Audubon to collaborate with a local teacher, Craig Kuchel, and several of his biology students. Together, we plan to monitor spring and fall migration nocturnal flight calls at the Florence-Carlton High School. This project provides us with data from another part of the valley and gives the students training and experience in the field of bioacoustics.



2015 Nocturnal Flight Call  
Monitoring Stations

Florence-Carlton High School

# Spring Migration Update

## Raptor View Research Institute



We recorded our highest counts for 2015 this week, including 77 passing migrants on April 21. Red-tailed Hawks made up a large portion of this week's total, though they were outnumbered by both Cooper's Hawks and Sharp-shinned Hawks. We also recorded our first Broad-winged Hawk and Swainson's Hawk this week. We expect our weekly totals to remain high through the first days of May.

Weekly (4/16-4/22) and Seasonal Raptor Totals			
		Weekly Total	Season Total
Eagles	Golden Eagle	1	43
	Bald Eagle	0	12
	Unknown Eagle	0	5
Accipiters	Sharp-shinned Hawk	48	85
	Cooper's Hawk	48	102
	Northern Goshawk	1	3
	Unknown Accipiter	6	22
Buteos	Red-tailed Hawk	41	260
	Rough-legged Hawk	9	43
	Swainson's Hawk	2	2
	Broad-winged Hawk	1	1
	Ferruginous Hawk	0	0
	Unknown Buteo	4	44
Falcons	American Kestrel	25	47
	Merlin	2	2
	Peregrine Falcon	1	5
	Prairie Falcon	3	10
	Unknown Falcon	1	2
Other	Northern Harrier	16	41
	Osprey	9	19
	Turkey Vulture	13	81
	Unknown Hawk	11	26
	<b>TOTAL</b>	<b>242</b>	<b>615</b>

This Prairie Falcon passed right over our observation station. The dark feathers in its wingpits help distinguish it from a Peregrine Falcon.



The white in the wings and tail of this Golden Eagle identify it as a young bird.



The Osprey Rapunzel, banded at the Ranch Entrance Nest in 2012, is now a full adult and began her northern migration on April 20th. Though most Osprey in the region have already arrived at their nests, we hope to see her rear her first brood of chicks this summer. Last year she left her wintering grounds on May 11—far too late to hold down a nest and raise a clutch of young.

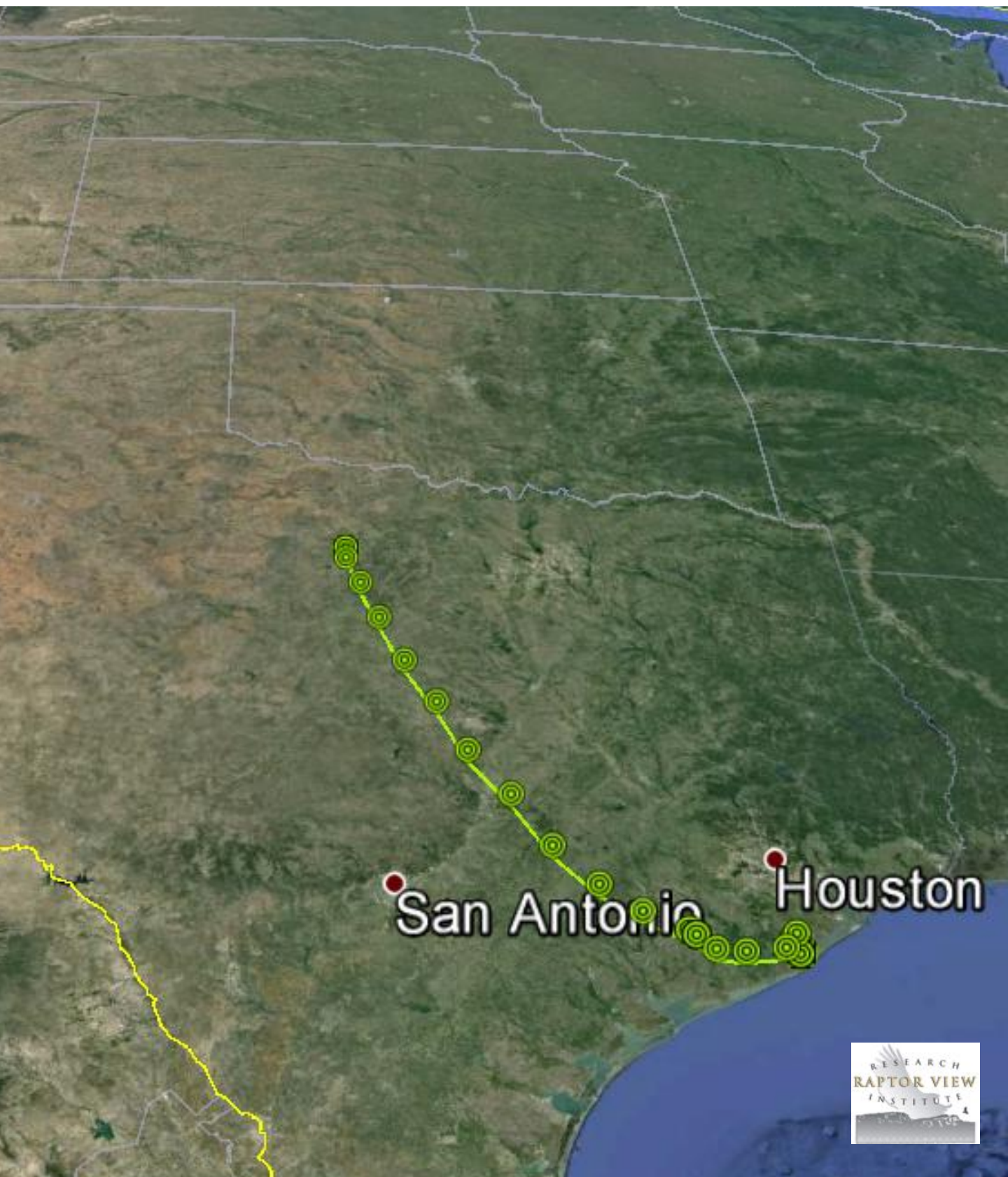


Photo Credits  
KS: Kate Stone



Horned Lark