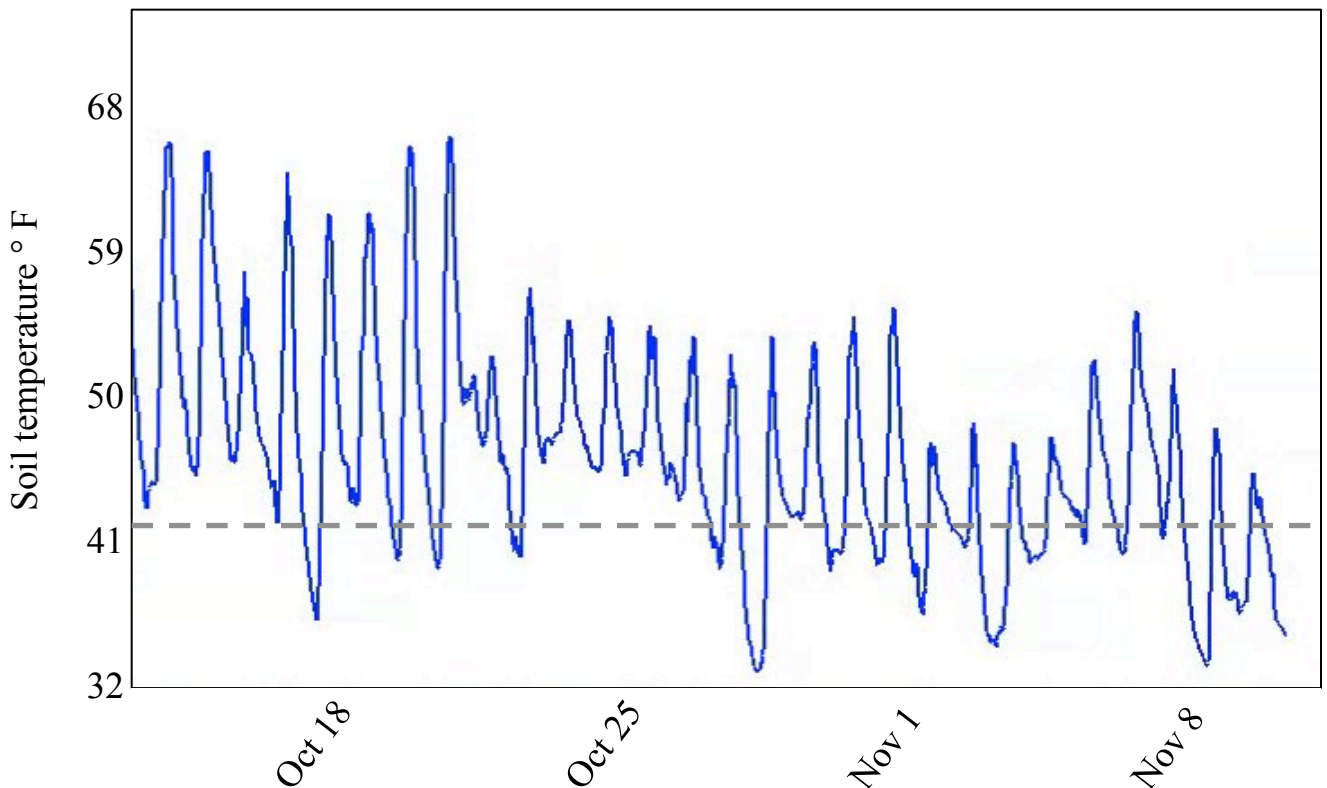


## Seeding update

We used weather forecasts and soil temperature sensors to determine appropriate times to plant dormant seed. Seeds of many species begin germinating at 45° F. Although it takes days or weeks for germination to occur at this temperature, for dormant seeding we seek to minimize the number of days seeds are exposed to germination inducing temperatures. Suitable temperatures for dormant seeding didn't occur until late October. Rain and snow stopped seeding on November 9. The soil surface froze this week making drill-seeding impossible. Seeding will resume when surface soils thaw.

Fall 2014 soil temperature



Orchard House Hill soil temperatures recorded at a 1" depth. The dashed line indicates seed germination temperature (45° F).

## Sainfoin Bench

Our goal was to fill areas where seedling establishment was low. We seeded on 10-28 and 10-29 before soil temperatures were consistently below 45°. The bulk of seed was from species with high dormancy, such as Indian ricegrass and purple prairie clover, that are unlikely to germinate in the fall.

Elk damage on Sainfoin bench is high. We will reevaluate the area in the spring to determine if supplemental seeding is needed.



### Grasses

Common name	Scientific name	Varieties
Bluebunch wheatgrass	<i>Pseudoroegneria spicata</i>	Goldar, Anatone
Indian ricegrass	<i>Achnatherum hymenoides</i>	Rimrock, Nespar
Snakeriver wheatgrass	<i>Elymus wawawaiensis</i>	Secar
Slender wheatgrass	<i>Elymus trachycaulus</i>	Pryor
Big bluegrass	<i>Poa secunda ssp. ampla</i>	Sherman
Sandberg bluegrass	<i>Poa secunda ssp. sandbergii</i>	MT1, High Plains

### Forbs

Common name	Scientific name	Varieties
Purple prairie clover	<i>Dalea purpurea</i>	Bismark
Prairie coneflower	<i>Ratibida columnifera</i>	Stillwater



## Orchard House Hill and North Orchard

We seeded diverse grasses and no forbs so herbicides can be used to control alien forb species next year. We will seed native forbs and shrubs after native grasses are established.



Common name	Scientific name	Varieties
Bluebunch wheatgrass	<i>Pseudoroegneria spicata</i>	Goldar, Anatone
Indian ricegrass	<i>Achnatherum hymenoides</i>	Rimrock, Nespar
Snakeriver wheatgrass	<i>Elymus wawawaiensis</i>	Secar
Slender wheatgrass	<i>Elymus trachycaulus</i>	Pryor
Bottlebrush squirreltail	<i>Elymus elymoides</i>	Toejam, Wapiti
Great Basin wildrye	<i>Leymus cinereus</i>	Trailhead
Canby bluegrass	<i>Poa secunda ssp. canbyi</i>	Canbar
Big bluegrass	<i>Poa secunda ssp. ampla</i>	Sherman
Sandberg bluegrass	<i>Poa secunda ssp. sandbergii</i>	MT1, High Plains

## East Crested

This 10 acre area was seeded the day before rain, snow, and cold temperatures halted seeding on 11-09-14. We included abundant annual sunflower, prairie clover and Lewis flax seeds. These late-season species are thought to be good competitors with summer annuals such as kochia and pigweed. We will broadcast Rocky Mountain beeplant in patches.



### Grasses

Common name	Scientific name	Varieties
Indian ricegrass	<i>Achnatherum hymenoides</i>	Rimrock, Nespar
Snakeriver wheatgrass	<i>Elymus wawawaiensis</i>	Secar
Slender wheatgrass	<i>Elymus trachycaulus</i>	Pryor
Big bluegrass	<i>Poa secunda ssp. ampla</i>	Sherman
Sandberg bluegrass	<i>Poa secunda ssp. sandbergii</i>	MT1, High Plains

### Forbs

Common name	Scientific name	Varieties
Annual sunflower	<i>Helianthus annuus</i>	
Purple prairie clover	<i>Dalea purpurea</i>	Bismark
Prairie coneflower	<i>Ratibida columnifera</i>	Stillwater
Western yarrow	<i>Achillea millefolium</i>	
Munros globemallow	<i>Sphaeralcea munroana</i>	
Lewis flax	<i>Linum lewesii</i>	Appar, Maple grove
Blanketflower	<i>Gaillardia aristata</i>	Meriwether